

Shawnigan Village Waterworks**ANNUAL REPORT**

(Drinking Water System Name)

Reporting Period:	2012
Operating Permit Number:	0353
Drinking Water System Owner:	Lidstech Holdings
Drinking Water System Contact:	
Name:	<u>Rod Lidstone</u>
Phone No:	<u>(250) 743-4091</u>
Email:	<u>info@shawniganwater.com</u>

1 Microbiological testing completed during this reporting period:

- a. bacteriological results attached to this report.
- b. adverse bacteriological results: None detected
 Listed in table below:

Adverse Results:

Date	Total coliform	E. Coli	Reason	Corrective Action
Nil				

2 Chemical results for this reporting period:

None taken for this recording period

Shawnigan Village Waterworks ANNUAL REPORT

(Drinking Water System Name)

3 Summarize additional testing and sampling carried out in accordance with the requirement of a Water Source approval, Written Order or as per the conditions of your *Operating Permit*.

- no additional testing
 additional listed below: See also attached summary report and downloaded charts

Additional testing:

Description of parameter & reason for sampling	Health parameter or non-health related parameter	Corrective action necessary (Y/N?)	Corrective action taken
Turbidity monitoring as per VIHA Policy 3.3.	1 NTU or less for 95% of the days in the year (18 days). Not above 5 NTU on more than 2 days a year	N	None required: <ul style="list-style-type: none"> • 2 days over 1 NTU • 1 day over 5 NTU

4 Water Quality Complaints:

During the course of the year, the water system:

- did not receive water quality complaints (ie taste, odour, colour, etc)
 received water quality complaints and are listed below:

Water Quality Complaints:

Date	Water quality complaint	Corrective action taken
	Several low Pressure phone calls	These were all during our flushing periods

Shawnigan Village Waterworks ANNUAL REPORT

(Drinking Water System Name)

7 Major expenses incurred during the period covered by the report:

To purchase or install required equipment: \$55,000
 To repair equipment: \$ 4,103
 To replace equipment: \$ 6,524
 To complete annual maintenance of system: *(system flushing, replacement of carbon filters, etc)* \$11,000
 To complete specialist report (specify): none

8 Further communication with users:

a. Indicate how you notified system users that your annual report is available, and is free of charge:

- hand delivered
- public access/ notice via web
- public access/notice via government office
- public access/notice via newspaper
- public access/notice via bill stuffer
- public access/ notice via other method (specify):

b. Improvements or remedial actions required by the Drinking Water Officer:

- no action required
- Drinking Water Officer inspection report attached to report
- actions required by Drinking Water Officer listed below:

Improvements/Remedial Actions:

Required action	Completion date
None	

c. Future water system improvements:

- no improvements planned
- improvements listed below:

Shawnigan Village Waterworks**ANNUAL REPORT***(Drinking Water System Name)***Future Improvements:**

Future plans	Planned completion date
New water main at Wilmot and Bobolink to get more houses changed over to new reservoir and increase low pressure area.	July 2013
Poly liner Jersey Rd. reservoir to combat corrosion	July 2014
Ultra violet disinfection	2015

d. Emergency Response Plan can be accessed by:

- posting on web
- posting at nearest government office
- contacting water system owner
- Other (specify): _____

SYSTEM NAME <i>Shawnigan Village Waterworks</i>		E.H.O. NAME <i>Mark Hall</i>	
ADDRESS <i>1584 Shawnigan Lake rd.</i>		POSTAL CODE	SYSTEM NUMBER
OPERATOR <i>Rod Lidstone</i>		INSPECTION DATE (DMY) <i>08 NOV 2012</i>	TIME SPENT (Hrs. - nearest 1/4) <i>1.0</i>
SYSTEM TYPE (CHECK One)		TYPE OF INSPECTION	
<input type="checkbox"/> > 20,000 (DWP) <input type="checkbox"/> 10,001 - 20,000 (DWM) <input checked="" type="checkbox"/> 301 - 10,000 (DWT) <input type="checkbox"/> 15 - 300 (DWC) <input type="checkbox"/> 2 - 14 (DWS) <input type="checkbox"/> 1 - SERVES PUBLIC (DWQ) <input type="checkbox"/> 1 HAULER (DWH)		<input type="checkbox"/> INITIAL <input checked="" type="checkbox"/> ROUTINE <input type="checkbox"/> COMPLAINT <input type="checkbox"/> FOLLOW-UP	

CRITICAL HAZARD

These items relate to Public Health Safety & MUST RECEIVE IMMEDIATE ATTENTION

Microbiological Contamination of Raw Water Supply Due to:

- 301 Flood
- 302 Sewage
- 303 Industrial
- 304 Agriculture
- 305 Other (Specify) _____
- 306 Chemical Contamination of Raw Water Supply
- 307 Contamination of Finished Water - Reservoir
- 308 Contamination of Finished Water - Mains
- 309 Cross-Connection
- 310 Use of Unapproved Source
- 311 Interruption of Treatment
- 312 Inadequate Treatment
- 313 Other (Specify) _____

SANITATION & MAINTENANCE

These items must be corrected within a designated time period

- 314 Improper Maintenance of Distribution System
- 315 Improper or No Disinfection of New or Repaired Main
- 316 Source Unprotected and Subject to Contamination
- 317 Inadequate or Improper Construction of Water Works
- 318 Inadequate Microbiological Analysis Data
- 319 Inadequate Chemical Analysis Data
- 320 Interruption of Treatment
- 321 Inadequate Treatment
- 322 Emergency Response Plan
- 323 Other (Specify) *Annual Report*

CODE	FINDINGS AND ACTIONS REQUIRED
<i>323</i>	<i>Submit a copy of your 2011 Annual Report</i>
<i>Comments: - Emergency Response Plan is updated</i>	
<i>- Recent bacteria samples have been satisfactory</i>	
<i>- Chlorine Residual is monitored and recorded</i>	
<i>- Turbidity averaging 0.4 NTU's</i>	
<i>- System is well maintained</i>	
<i>- Ensure this office is updated on future plans regarding VIHA's 4-3-2-1 policy compliance</i>	

At the time of inspection this system has a hazard rating of HIGH MODERATE LOW Issue Permit Conditions of Permit

FOLLOW UP VISIT PHONE Date

RECEIVED BY <i>Mail</i>	PRINT NAME <i>1 1</i>	E.H.O.
----------------------------	--------------------------	--------

Water Sample Range Report

Vancouver Island Health Authority

Central Island

Facility Name: SHAWNIGAN VILLAGE WATER WORKS
Facility Type: DWC
Date Range: Jan 1 2012 to Dec 31 2012
Date Created: Jan 22 2013

Sampling Site	Date Collected	Total Coliform	E. Coli	Fecal Coliform
<u>Shawnigan Lake,</u>				
<u>2730 Galland Road,</u>				
<u>Dist. site, Weekly</u>				
	04-Jan-2012	L1	L1	
	11-Jan-2012	L1	L1	
	18-Jan-2012	A		
	25-Jan-2012	L1	L1	
	01-Feb-2012	L1	L1	
	08-Feb-2012	L1	L1	
	14-Feb-2012	L1	L1	
	22-Feb-2012	L1	L1	
	28-Feb-2012 9:00:00 PM	L1	L1	
	07-Mar-2012	L1	L1	
	14-Mar-2012	L1	L1	
	20-Mar-2012	L1	L1	
	28-Mar-2012	T		
	04-Apr-2012	L1	L1	
	11-Apr-2012	L1	L1	
	17-Apr-2012	L1	L1	
	24-Apr-2012	L1	L1	
	02-May-2012	L1	L1	
	08-May-2012	L1	L1	
	16-May-2012	L1	L1	
	23-May-2012	L1	L1	
	30-May-2012	L1	L1	
	06-Jun-2012	L1	L1	
	12-Jun-2012	L1	L1	
	20-Jun-2012	L1	L1	
	27-Jun-2012	L1	L1	
	03-Jul-2012	L1	L1	
	10-Jul-2012	L1	L1	
	17-Jul-2012	L1	L1	
	25-Jul-2012	L1	L1	
	01-Aug-2012	L1	L1	
	14-Aug-2012	L1	L1	
	22-Aug-2012	L1	L1	
	29-Aug-2012	L1	L1	
	05-Sep-2012	L1	L1	
	12-Sep-2012	L1	L1	
	19-Sep-2012	L1	L1	
	26-Sep-2012	L1	L1	
	03-Oct-2012	L1	L1	
	10-Oct-2012	L1	L1	
	16-Oct-2012	L1	L1	
	23-Oct-2012	L1	L1	
	31-Oct-2012	L1	L1	

07-Nov-2012	L1	L1
14-Nov-2012	L1	L1
21-Nov-2012	L1	L1
28-Nov-2012	L1	L1
05-Dec-2012	L1	L1
12-Dec-2012	L1	L1
19-Dec-2012	<u>L1</u>	<u>L1</u>
Total Positive:	0	0

0

Shawnigan Lake,
Aitken & Fraser
Store, Dist. site,
Weekly

04-Jan-2012	L1	L1
11-Jan-2012	L1	L1
18-Jan-2012	A	
25-Jan-2012	L1	L1
01-Feb-2012	L1	L1
08-Feb-2012	L1	L1
14-Feb-2012	L1	L1
22-Feb-2012	L1	L1
28-Feb-2012 9:00:00 PM	L1	L1
07-Mar-2012	L1	L1
14-Mar-2012	L1	L1
20-Mar-2012	L1	L1
28-Mar-2012	T	
04-Apr-2012	L1	L1
11-Apr-2012	L1	L1
17-Apr-2012	L1	L1
24-Apr-2012	L1	L1
02-May-2012	L1	L1
08-May-2012	L1	L1
16-May-2012	L1	L1
23-May-2012	L1	L1
30-May-2012	L1	L1
06-Jun-2012	L1	L1
12-Jun-2012	L1	L1
20-Jun-2012	L1	L1
27-Jun-2012	L1	L1
03-Jul-2012	L1	L1
10-Jul-2012	L1	L1
17-Jul-2012	L1	L1
25-Jul-2012	L1	L1
01-Aug-2012	L1	L1
14-Aug-2012	L1	L1
22-Aug-2012	L1	L1
29-Aug-2012	L1	L1
05-Sep-2012	L1	L1
12-Sep-2012	L1	L1
19-Sep-2012	L1	L1
26-Sep-2012	L1	L1
03-Oct-2012	L1	L1
10-Oct-2012	L1	L1
16-Oct-2012	L1	L1
23-Oct-2012	L1	L1
31-Oct-2012	L1	L1
07-Nov-2012	L1	L1
14-Nov-2012	L1	L1
21-Nov-2012	L1	L1

28-Nov-2012	L1	L1	
05-Dec-2012	L1	L1	
12-Dec-2012	L1	L1	
19-Dec-2012	<u>L1</u>	<u>L1</u>	
Total Positive:	0	0	0

#15, Shawnigan
Village MHP, Dist.
site, No Regular
Sampling

Result Values:

E - estimated

L - less than

G - greater than

Interpreting Sample Reports

In VIHA, the results of drinking water sampling are reported using the following coding system:

- L1 Less than 1 (no detectable bacteria) - Meaning: No bacteria present
- OG Overgrown - Meaning: Too many background bacteria to give an accurate count
- EST Estimated Count
- and
- A Sample not tested; Too long in transit
- C Sample leaked/broken in transit
- D Sample not tested; No collection date given
- T Sample submitted unsatisfactory. Exceeded 30 hours holding time, please resample.
- NS No sample received with requisition

Samples that contain total coliform:	0	0.00% of total
Samples that contain e. coli:	0	0.00% of total
Samples that contain fecal coliform:	0	0.00% of total
Number of positive samples in last 30 days:	0/6	
Total number of samples:	100	

Comments:

Submit an Annual Report for 2011



Environmental Health Officer

Jan 22 2013

FOR FURTHER INFORMATION PLEASE CALL: Hall, Mark (250) 737-2010 Duncan

Operator

Rod Lidstone
PO BOX 369
Shawnigan Lake, BC
V0R 2W0

(250) 389-4091

John Motherwell & Associates Engineering Ltd.

35 CADILLAC AVENUE, VICTORIA B. C. V8Z 1T3

Telephone: Bus. 250 475-3535
Fax. 250 475-3536
Res. 250 477-6701

CONSULTING ENGINEERS

JOHN L. MOTHERWELL
B.A.Sc., P.Eng., C.L.S., B.C.L.S.

S72-311

February 6, 2013

FAX (250) 743-4021

Lidstech Holdings Ltd.
P.O. Box 369
Shawnigan Lake BC V0R 2W0

Dear Rod:

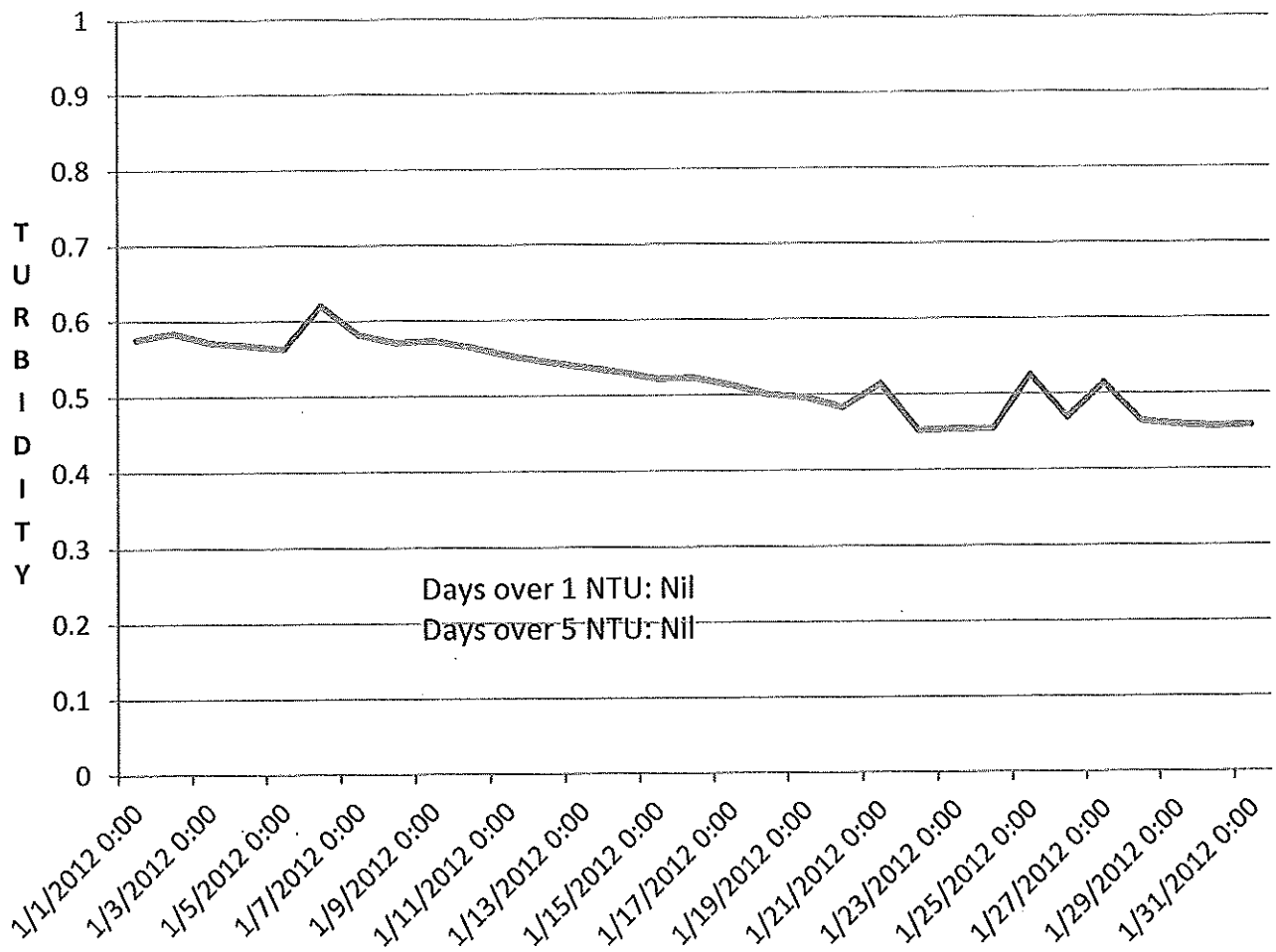
Re: Raw Water Turbidity and Temperature

Enclosed are copies of the turbidity results for July to December 2012.

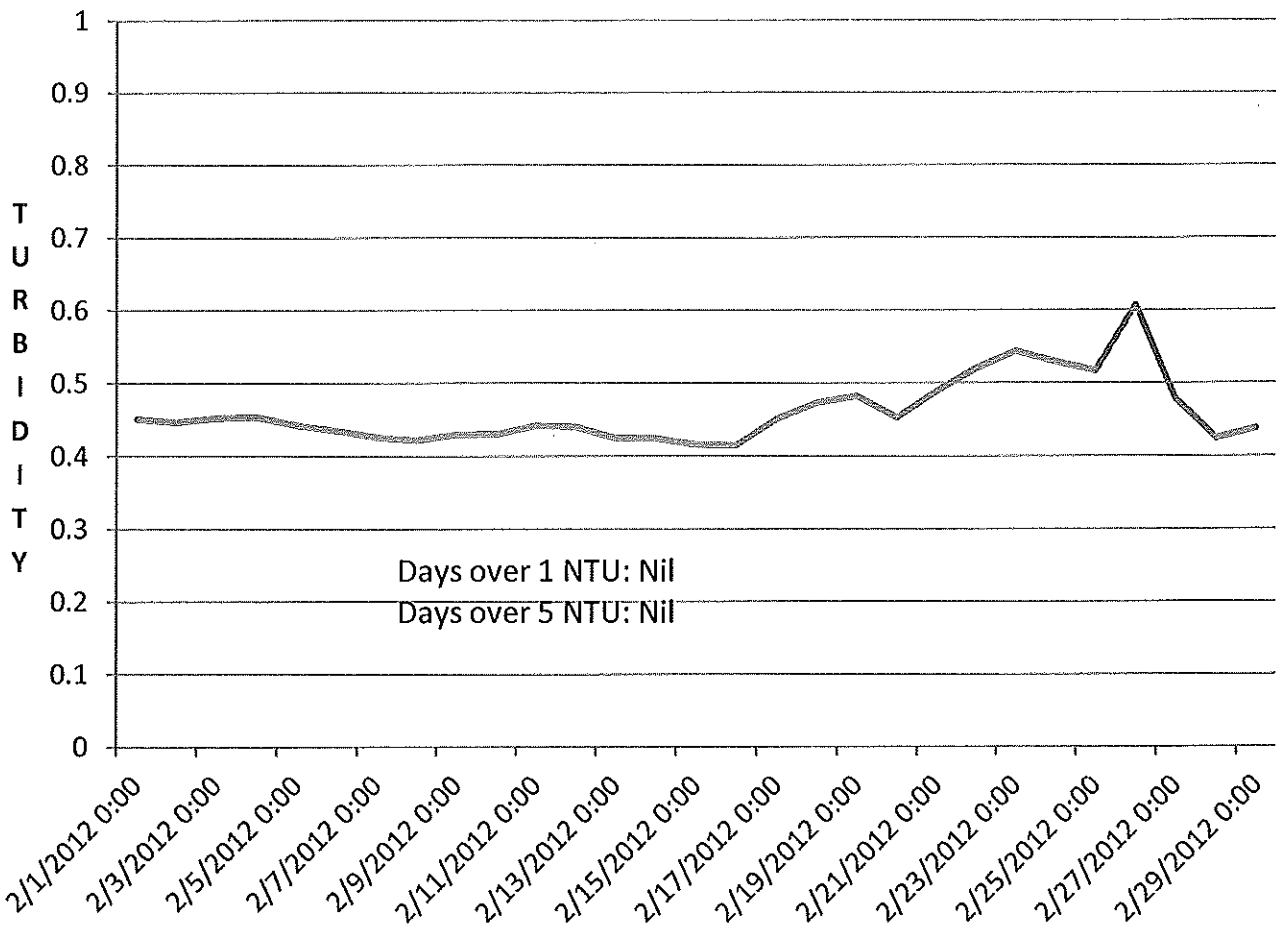
A summary of the results for the year 2012 is as follows:

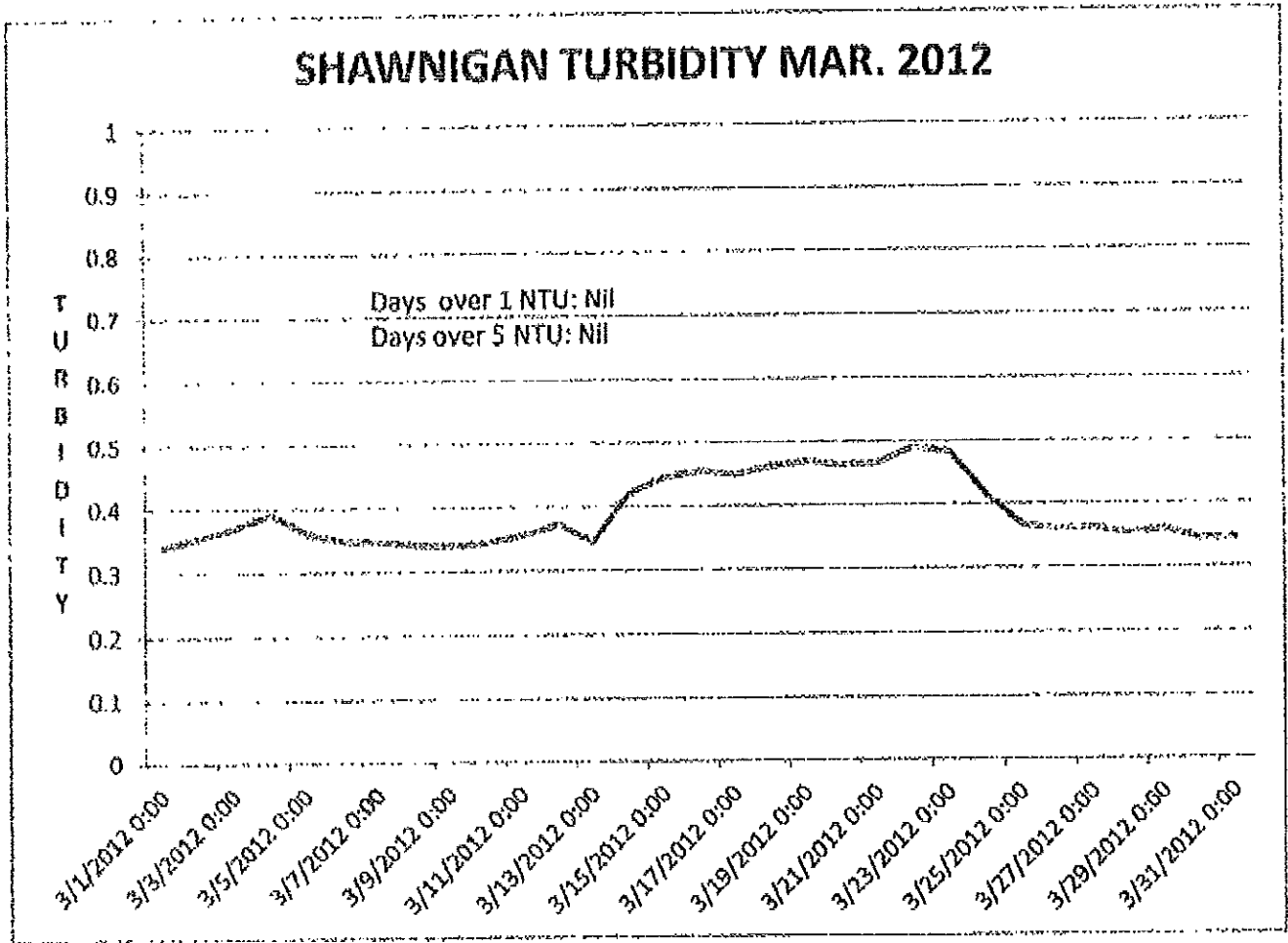
Month	Days over 1 NTU	Days Over 5 NTU
2012 J	—	—
F	—	—
M	—	—
A	—	—
M	—	—
J	—	—
J	2	2
A	—	—
S	—	—
O	—	—
N	—	—
D	—	—
Totals	2	2

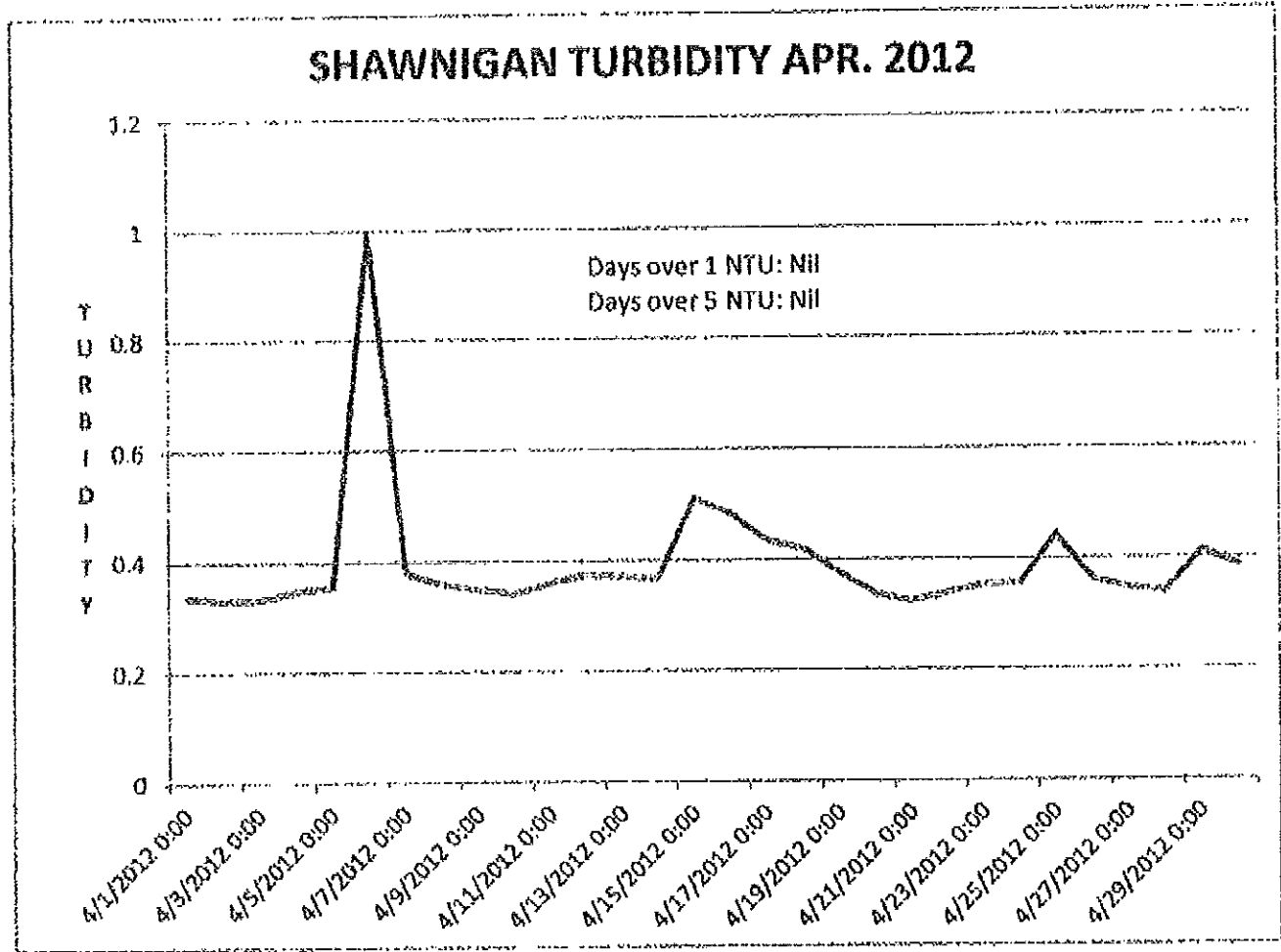
SHAWNIGAN TURBIDITY JAN. 2012

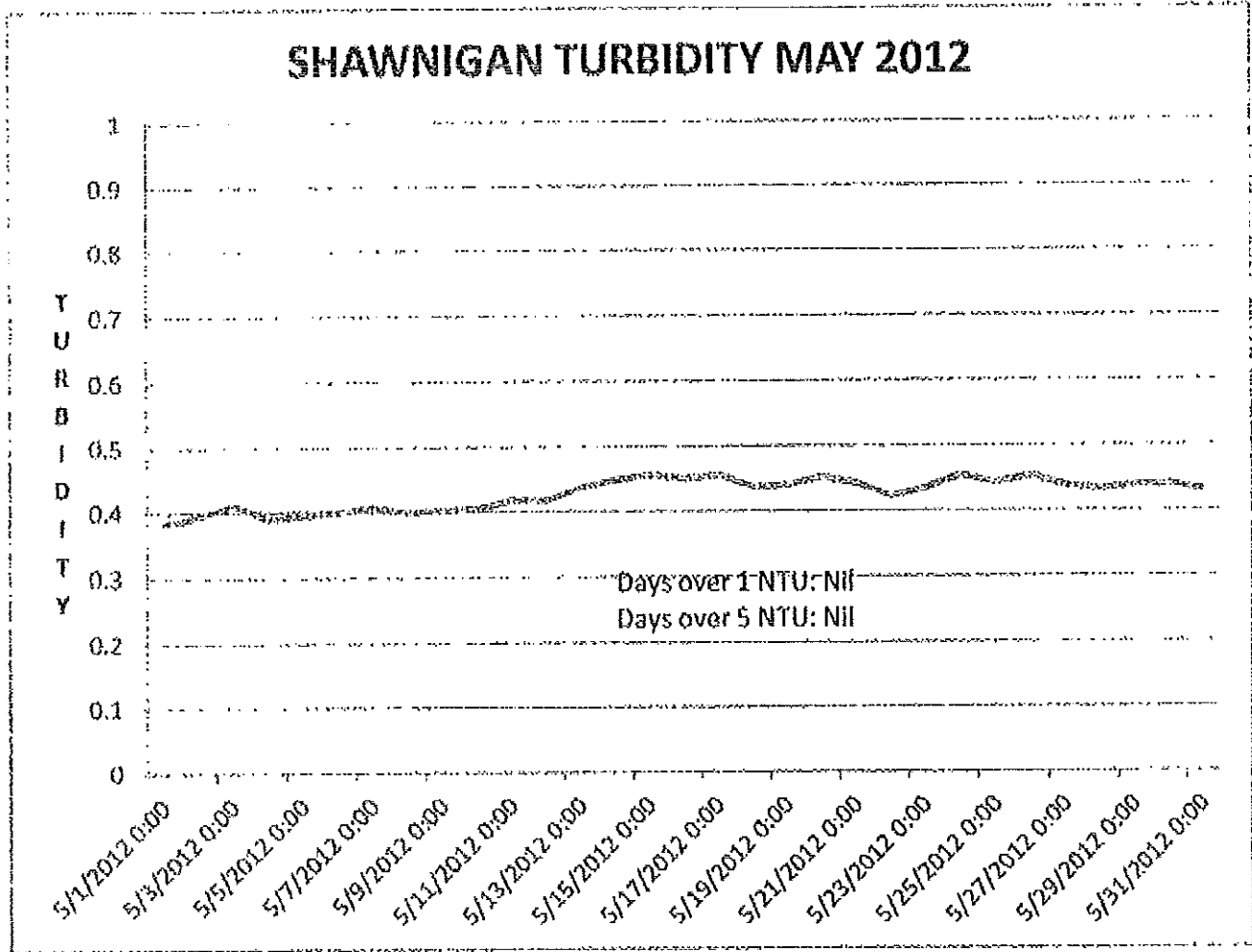


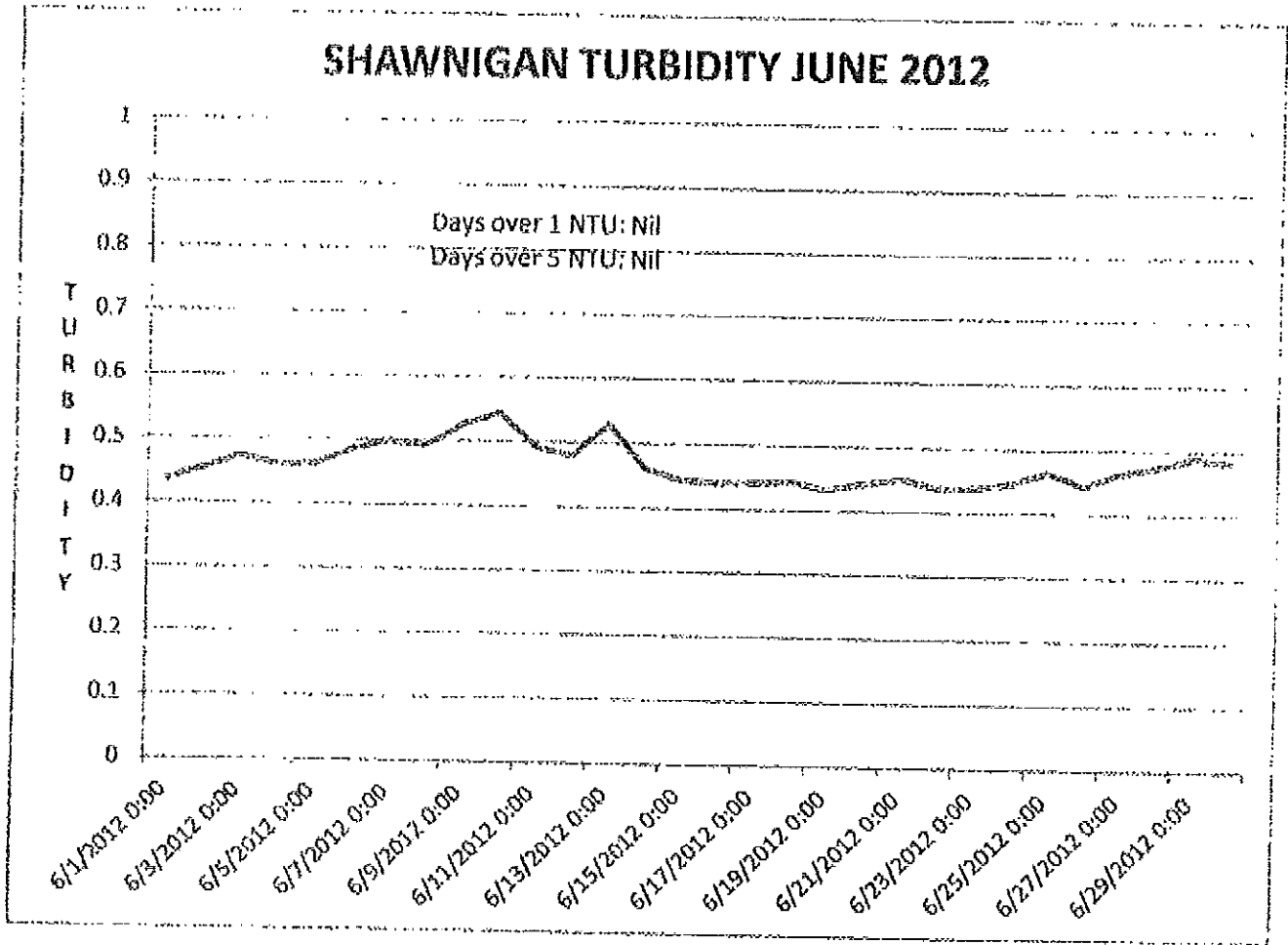
SHAWNIGAN TURBIDITY FEB. 2012



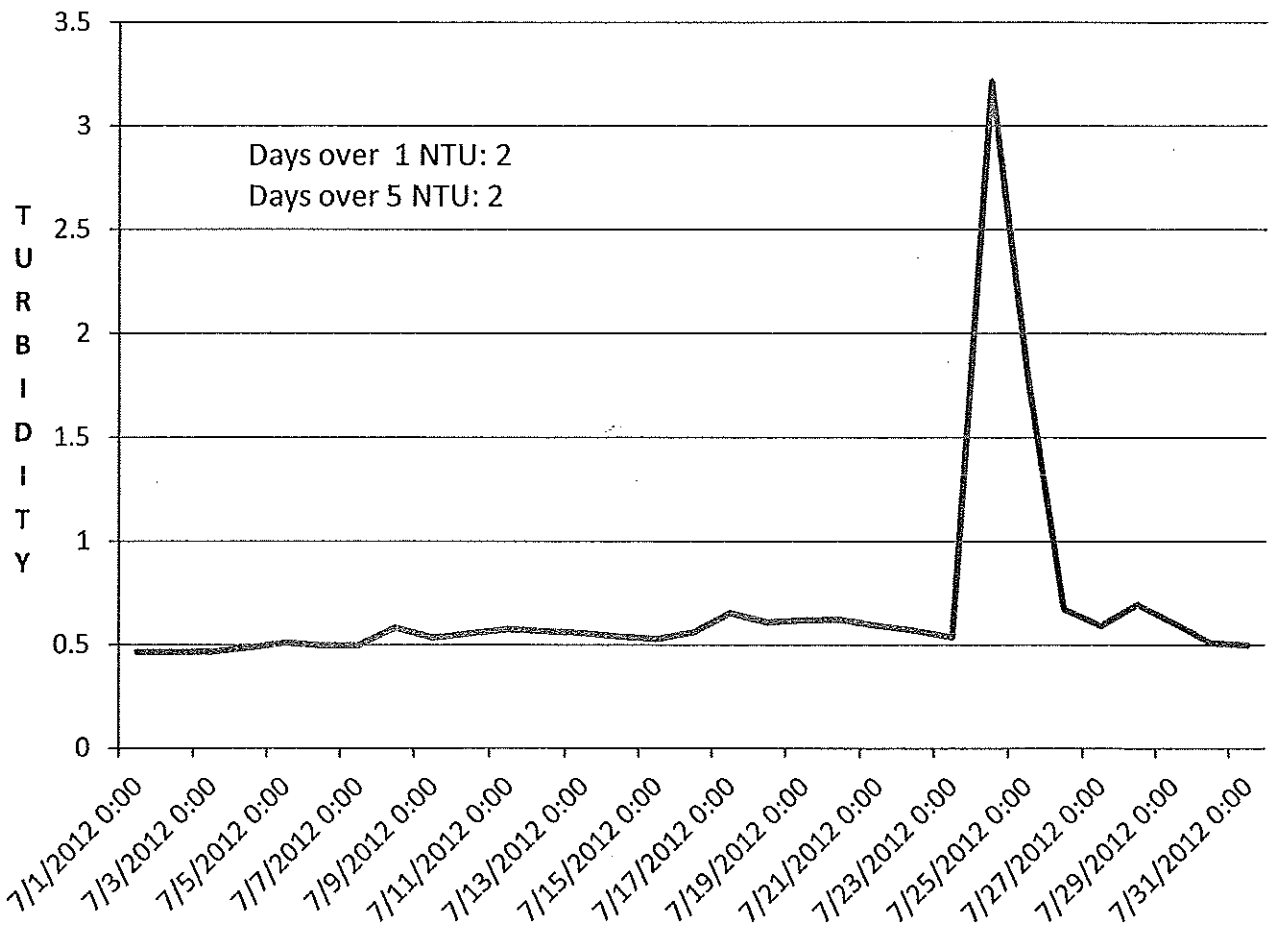




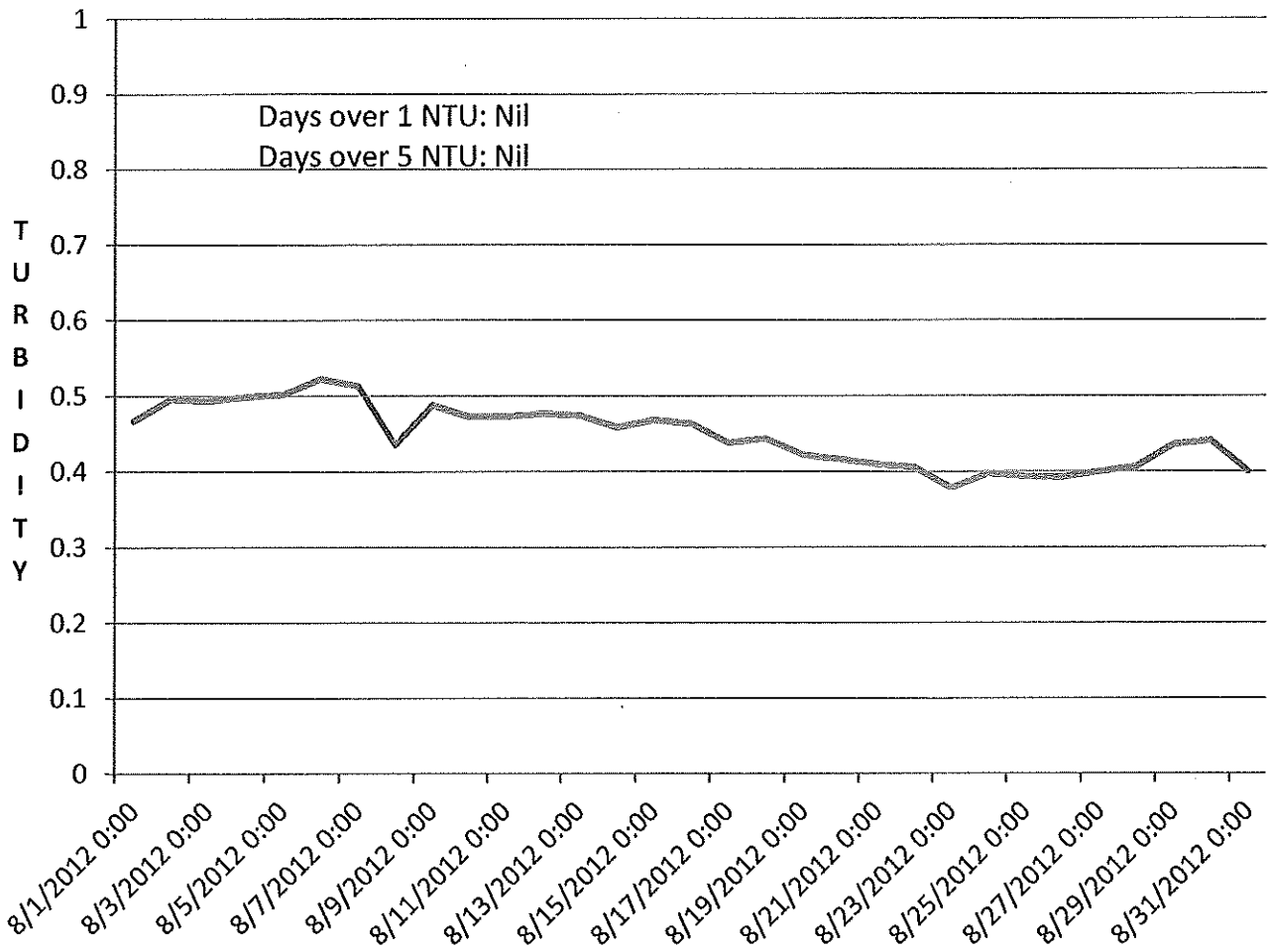




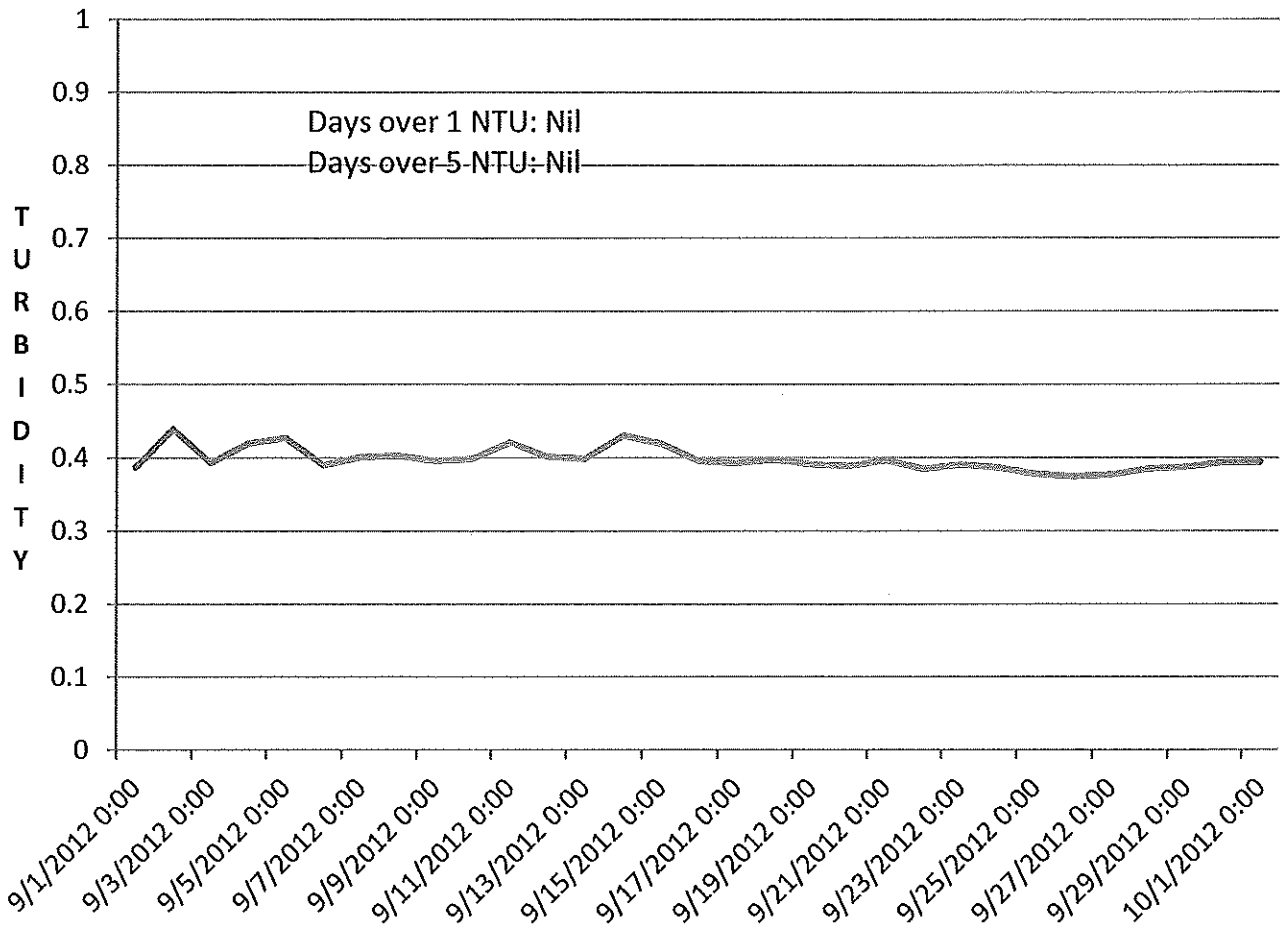
SHAWNIGAN TURBIDITY JULY 2012



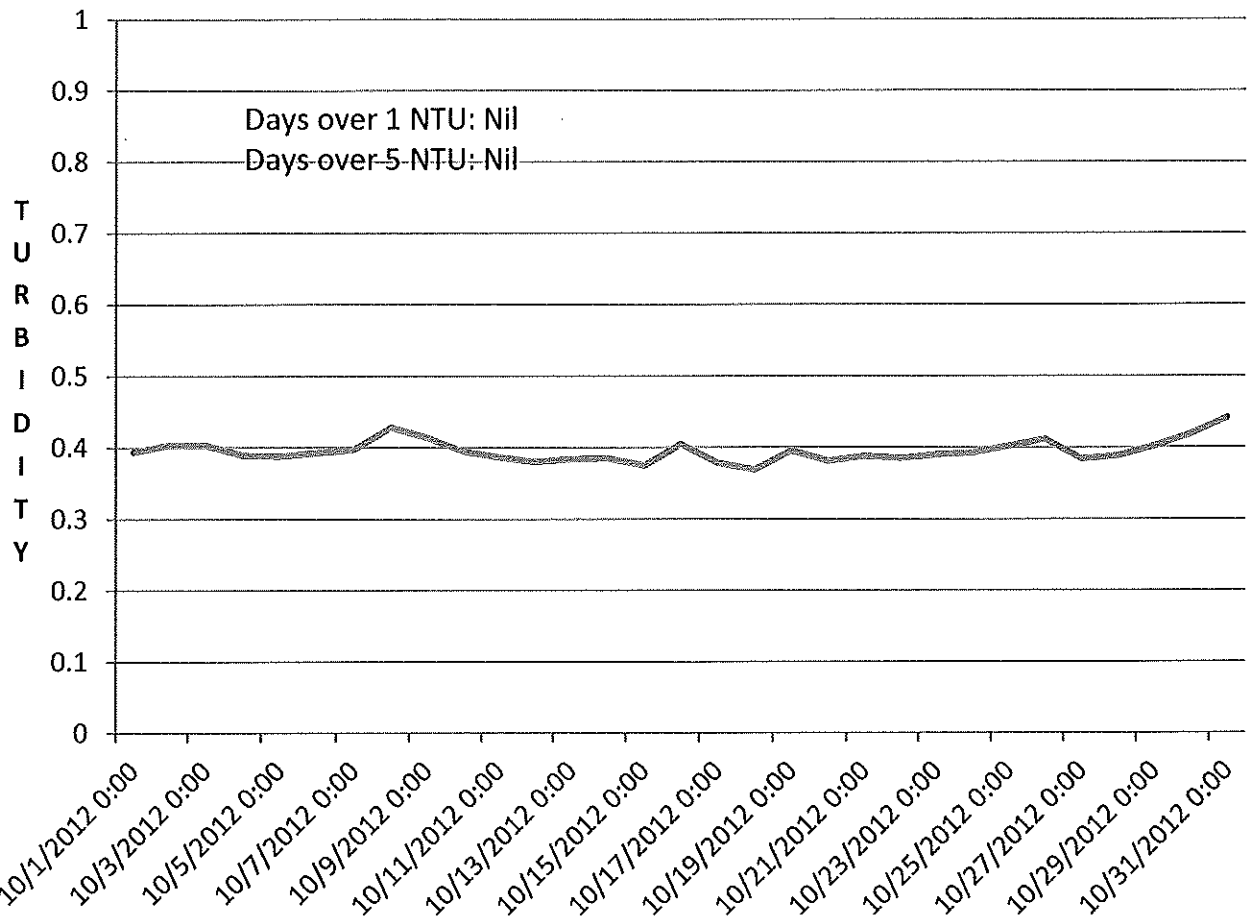
SHAWNIGAN TURBIDITY AUG. 2012



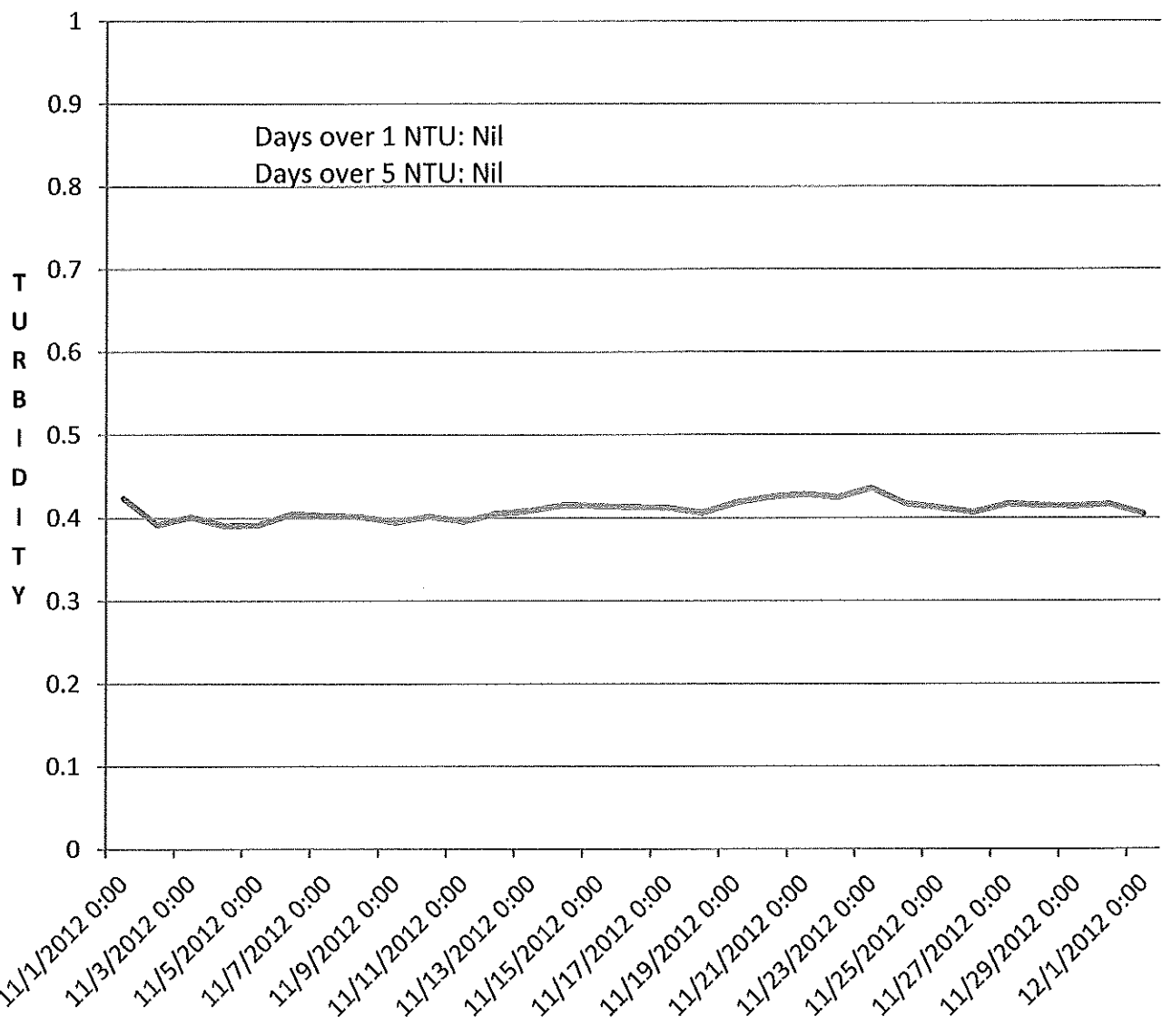
SHAWNIGAN TURBIDITY SEPT. 2012



SHAWNIGAN TURBIDITY OCT. 2012



SHAWNIGAN TURBIDITY NOV. 2012



SHAWNIGAN TURBIDITY DEC. 2012

